

Module 3 LO6

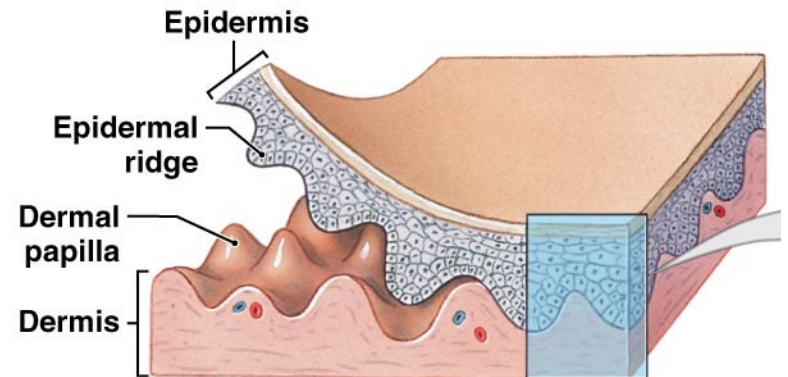
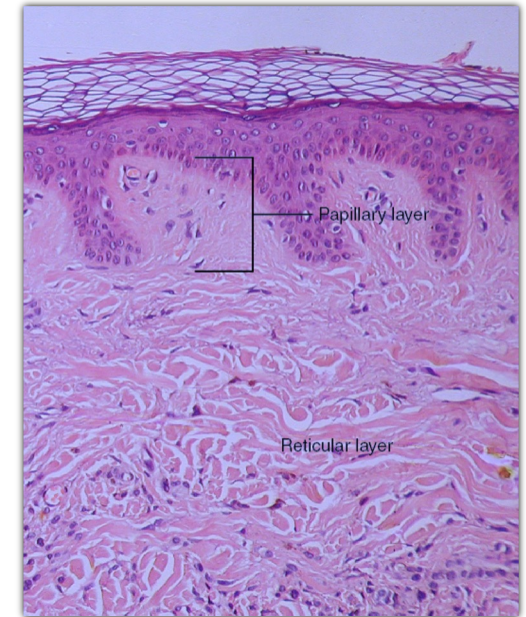
Dermis Structures and Functions

Dr. Lisa Brinn

lbrinn@fiu.edu

6. Dermis

- The dermis has several important characteristics:
- Composed of connective tissue containing collagen and elastic fibers
- Two layers of dermis are
 - Papillary region
 - Reticular region

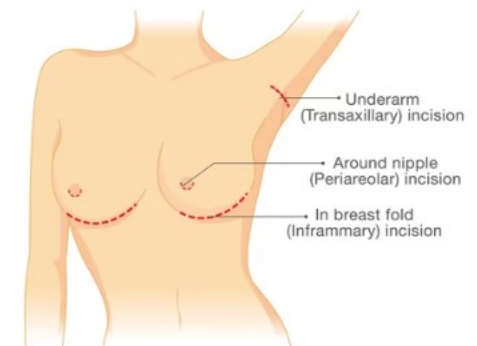
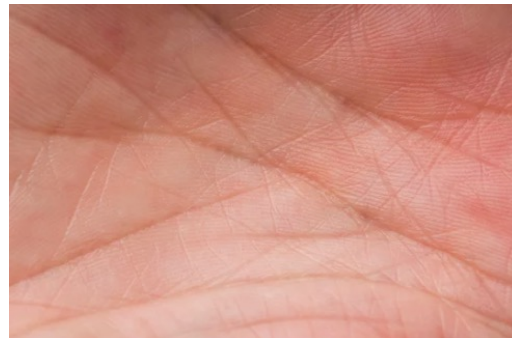
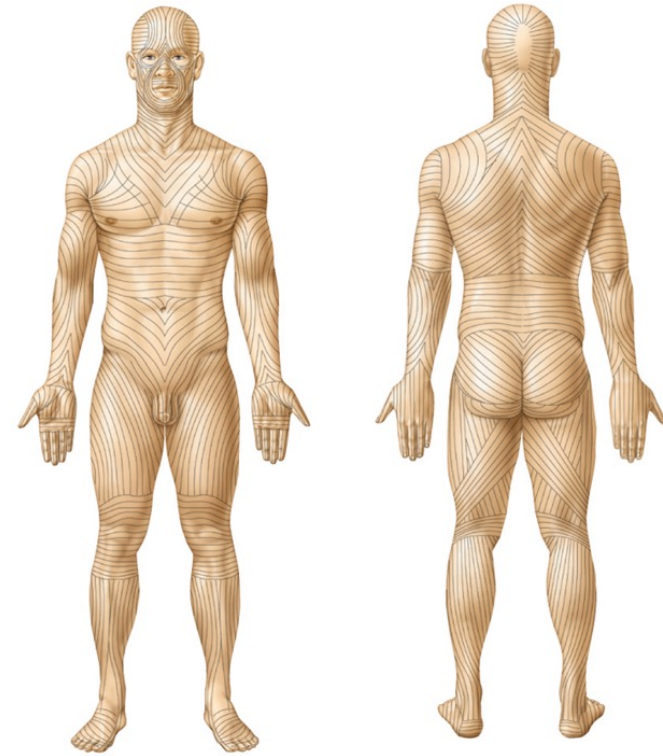
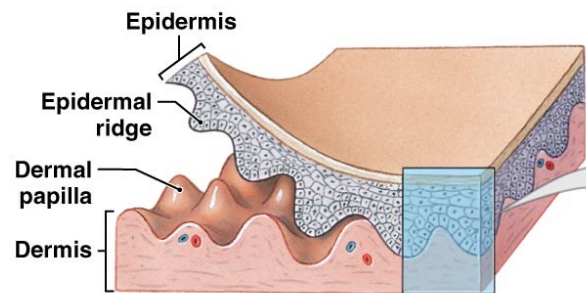


Summary of Papillary and Reticular Regions

Region	Description
Papillary region	Superficial portion of dermis consists of areolar connective tissue with thin collagen fibers and fine elastic fibers; contains dermal papillae that house blood capillaries, corpuscles of touch, and free nerve endings
Reticular region	Deeper portion of dermis; consists of dense irregular connective tissue with bundles of thick collagen and some coarse elastic fibers. Spaces between fibers contain some adipose cells, hair follicles, nerves, sebaceous and sudoriferous glands.

Ridges and Grooves

- Lines of cleavage or tension lines
- Epidermal ridges
 - fingerprints
- Dermatoglyphics



Cellulite



Stretch Marks

